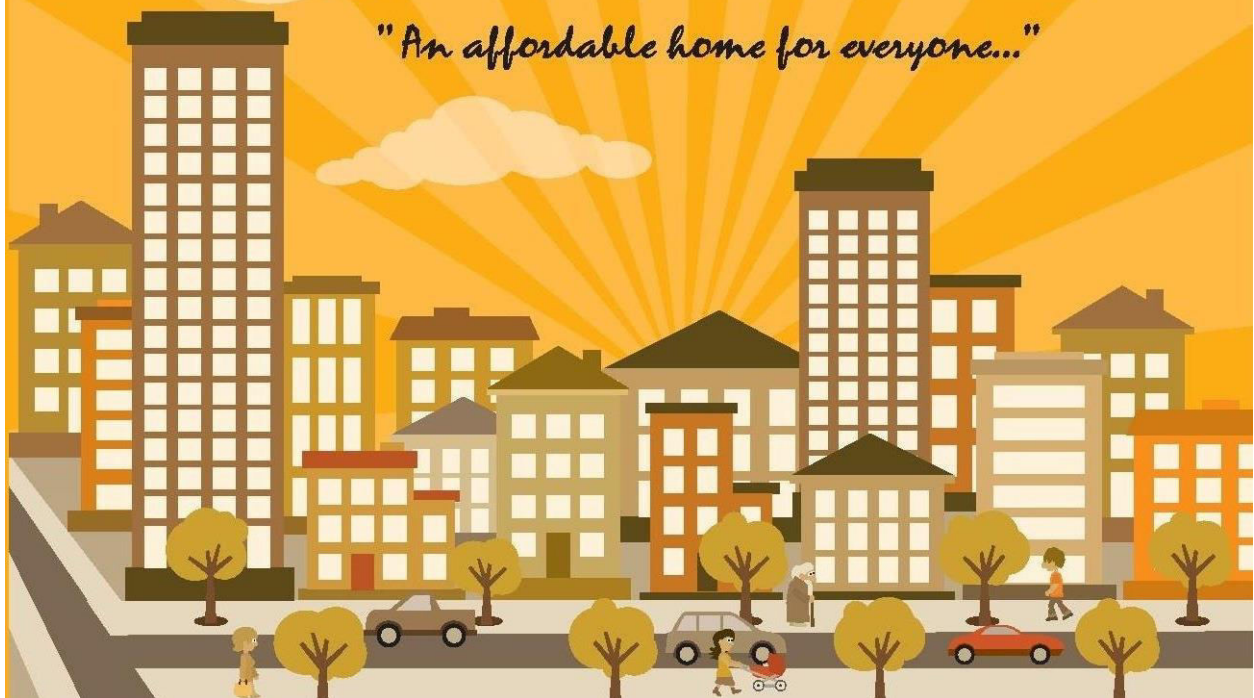




"An affordable home for everyone..."





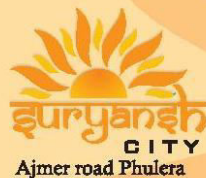
The ever reliable Group

CAPITAL Dream Homes Pvt. Ltd. emergence in the map of real estate industry is an acknowledgment of trust, transparency and transformation. Since, the group has been focusing on these aspects of principles ever since its inception into the real estate industry past so many years. By following these principles as path of prosperity, the group has achieved an unparalleled height and has redefined the meaning of affordable housing. On this process, the group has also crafted a niche not only in the hearts of its customers but also in the real estate market. Emphasizing more on a customer-developer relationship, Capital Dream Homes Pvt. Ltd. has always handed over real estate solutions on time to the buyers. The professionalism that the group adheres to is the main reason for meeting the stiff deadlines. Today, the group is recommended by thousands and investors are blindly trusting on it. Isn't it a huge complement?

Capital's Milestones



Ajmer road Phulera



Ajmer road Phulera



Tonk Road Jaipur



Ajmer road Phulera

ROOPANGARH



Roopangarh Introduction:

Roopangarh Fort is a former fortress and palace in the town of Roopangarh, Rajasthan, India that is today a hotel. The fortress was originally built by, and named after, Maharaja Roop Singh of Kishangarh in 1648. It was sited at strategic point atop a hill to the north of Kishangarh controlling the important trade route to the Sambhar Salt Lake. Around the fort a substantial town grew up that became a centre for artisans and manufacturers. For a century it also served as the primary residence of the Maharajas of Kishangarh, and the capital of the state. An ornate palace was built next to the fortress.

In 1999 the Maharaja opened the fort as a hotel, but left the interior and exterior little changed from its time as a palace. It has 20 rooms, some of which are vast former royal suites.

Near by Cities to Roopangarh:

Makrana , Sambhar , Phulera , Kishangarh & Ajmer

Colleges near Roopangarh:

Dayanand College

Sanskar ITC

Rajasthan Dental College & Hospital

Jawaharlal Nehru Medical College(govt.)

Schools in Roopangarh:

Jhunjhunu Acedemy Rupangarh

National S.sansthan Rupangarh

Balaji Inter. P.s. Rupangarh

Mahaveer S.sansthan Rupang.

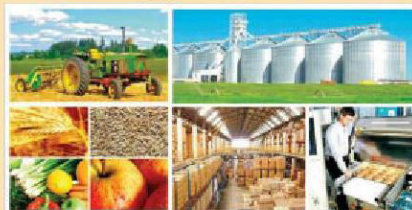
Mevara Public School Rupangarh

Roopangarh Mega Food Park:

Mega Food Park Scheme is the flagship program of the Ministry of Food Processing Industries, Government of India. Mega Food Park Scheme proposes a demand driven/pre-marketed model with strong backward/forward linkages and sustainable supply chain. The primary objective of the proposed scheme is to facilitate establishment of integrated value chain, with processing at the core and supported by requisite forward and backward linkage.

The scheme provides for creating infrastructure for farm level primary processing centre-cum- cold chain in identified clusters, processing of intermediate products, collection centre cum cold chains, centralized infrastructure to take care of processing activities, which require cutting edge technologies and testing facilities, besides the basic infrastructure for water supply, power, environmental protection systems, communication etc. The supply chain will establish on-Farm Primary Processing Centre cum cold chain facilities for aggregation of the produce at village level, which will be linked to the retail outlets/processing parks through appropriate produce aggregation facility and collection centre cum cold chain and Refer van transportation net works. The scheme is proposed to be entrepreneur driven to be implemented on a PPP basis.

Roopangarh Mega Food Park



Roopangarh RIICO Industrial Area:

Roopangarh Industrial Area developed by DIC. There are 440 plots out of these 443 plots are allotted & one plot reserved for service centre. 40 enterprises are in production of marble slabs & Tiles. According to demand of enterprises, Roopangarh Industrial Area II have been developed by DIC. There are 90 plots in IInd Phase all plots are allotted to enterprenure. 91 Bigha land reserved for expansion of Roopangarh II. Now at present DIC has handed over this area to Riico for further development.

AJMER

"Become first smart city of India"



Ajmer's famous 13th-century Sufi shrine draws millions of pilgrims from around the world every year. The city recently launched a new website called "Amazing Ajmer". But life in this ancient city is anything but amazing.

But soon, Ajmer could be transformed into a 21st-century "smart city" – an urban-planning term for the gleaming metropolises of the future that Prime Minister Narendra Modi wants to create by 2022. These modern marvels would be connected by grids in which water, electricity, waste removal, traffic, hospitals and schools are seamlessly integrated with information technology to run them more efficiently.

The government has set aside \$7.5 billion (£4.75bn) to make it happen, and Mr Modi officially launched the programme late last week. But it's a grand vision that the residents of Ajmer – one of the 100 cities designated for the modernisation – are not quite ready for.

The U.S.-India Business Council (USIBC) and FICCI held a Smart Cities Conclave for Ajmer with senior representatives from the Rajasthan and the U.S. Government present during the conference.

This is the first major Smart Cities Conclave for Ajmer and included participation from major Indian and US companies such as United Technologies Corporation (UTC), IBM, Vermeer Corporation, Viacom 18, Corning, AECOM, CH2MHill, Oracle, Yes Bank, ICICI Bank, Mahindra Group and Black and Veatch, among others, to create a roadmap and advance the goal of developing Ajmer into a Smart City as articulated in the joint statement between Prime Minister Narendra Modi and President Barack Obama in September 2014.



Sambhar

World largest solar power plant in Sambhar



Rajasthan famous Sambhar lake with saltwater in the energy and tourism will take a new identity. Sambar Salt Ltd. (SSL) on the initiative of the half-dozen companies lake shore four thousand megawatts of solar plants on the unused portion of the plan, on which the center also has ratified.

It will be the world's largest solar plant. At the same vicinity as the hub of the area to develop various types of heritage planning, so that foreign tourists can be invited to the Rajasthani culture.

Hindustan Salts Limited, a subsidiary of the Centre and the state government's share Sambhar Salts Limited company, which has about 57 thousand acres of Sambhar lake shore gigantic land area. No use of the land due to saltwater was happening. Such energy and

tourism in the land development plan has been prepared. This land, 75 km from Jaipur Central Enterprise Hindustan Salts Limited. Sambhar Salts Limited subsidiary. According to sources, in the first phase of the plan is to put a thousand-megawatt plant, which is estimated to cost around 7.5 thousand crore. The first phase will begin by the end of 2016. However, public-private partnership the Rural Heritage Hub, bird watching and many heritage hub will be developed.

The new company will provide direction a part from the whole scheme Sambar Salt BHEL, Solar Power Energy Corporation, Power Grid Corporation, Satji Hydro Development Corporation, plans to add to the reel. With the approval of the center of the known sources on the part of these companies share the new company will be created. It is expected to take about six months, after which work will come faster. From coconut and palm trees, greenery.

The area to be developed as a green area are exploring the possibility. The vacant ground coconut, palm trees, etc. is planned. Sambar unused land to develop in the energy and tourism sector is planned. This is just the initial stage, which is expected to produce good results.



Future will be at Phulera

About Phulera

Phulera is a city and Municipality in Jaipur District in the Indian state of Rajasthan.

Geographic

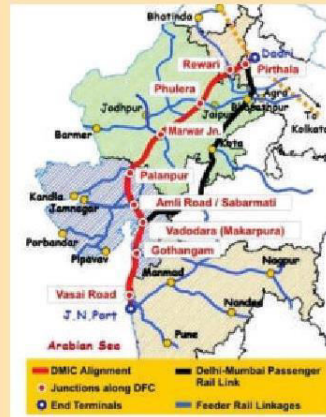
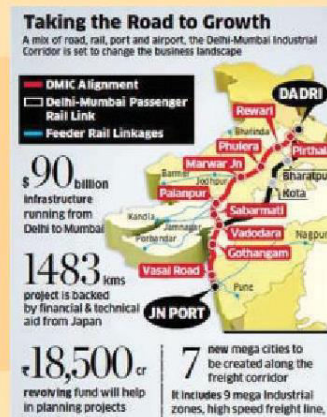
Phulera is located at 26.87°N 75.23°E. It has an average elevation of 387 meters (1269 feet)

Huge Potential at Phulera

- ✓ **Drinking water is available from Bisalpur.**
- ✓ **Train passes through Phulera for Jodhpur, Jaipur, Ajmer and New Delhi.**
- ✓ **Phulera is well connected by road to the NH-8, SH-2 and SH-57.**
- ✓ **Proposed facility at Phulera:-**
 1. A freight consolidation centre to warehouse and sort outward and inward freight generated in the vicinity.
 2. A roll on and roll off Facility for Trunk Loading and unloading an Railway wagons.
 3. A trade centre to Facility storage, Display and whole-sale Trading of goods produced in the area.
 4. Ancillary services such as customs bonded warehousing, cold storage etc.
 5. Value added services like It, Tracking, Inventory control, Engineering for loading and packaging, Automated sorting facilities, Labeling and packaging, Inspection and quality control, Material recycling and Equipment repairs and Maintenance.

Why Phulera?

DMIC (Delhi-Mumbai Industrial Corridor)



The Industrial corridor will emerge within 150km of the 1,483 Railway Freight Corridor that will cover Six Indian States of Delhi (22km), Maharashtra (148km), Gujarat (565km), Haryana (148km), Uttar Pradesh (22km) and Rajasthan (578km).

End Terminal at Dadri in the National Capital Region of Delhi & Jawaharlal Nehru Port near Mumbai The first phase from 2012 to 2019 across seven new cities will be completed by 2019 and train will be run by 2017. This corridor will be equipped with an array of Infrastructure Facilities such as power Facilities, Rail connectivity to ports an route etc.

मरुधरा में उगेगा नारियल



STAR CITY LOCATION MAP

Not to be Scale



CAPITAL DREAM HOMES PVT. LTD.

311, 3rd Floor Gagandeep Building, Rajendra Place, New Delhi-110008
Website : www.capitaldreamhomes.co.in, E-mail : info@capitaldreamhomes.co.in
Tel.: 011-46242222, Helpline : +918285318522, 8826401369